



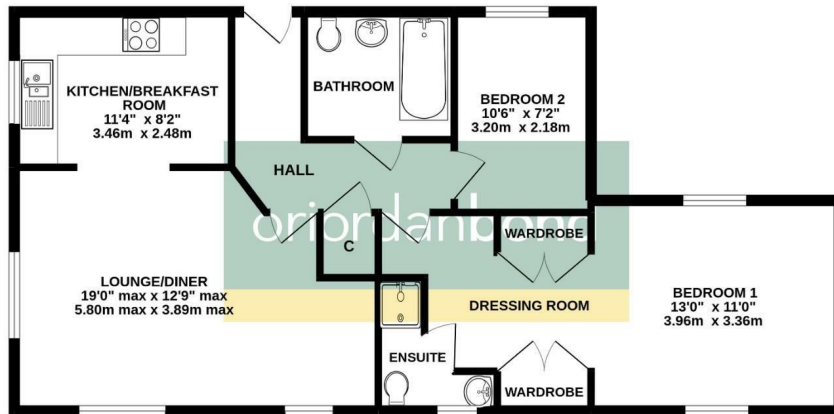
Primrose Walk

Grange Park, Northampton

oriordanbond
LETTINGS



GROUND FLOOR
773 sq.ft. (71.8 sq.m.) approx.



TOTAL FLOOR AREA : 773 sq.ft. (71.8 sq.m.) approx.
While every attempt has been made to ensure the accuracy of the floorplan contained here, measurements of doors, windows, rooms and any other items are approximate and no responsibility is taken for any error, omission or mis-statement. This plan is for illustrative purposes only and should be used as such by any prospective purchaser. The services, systems and appliances shown have not been tested and no guarantee as to their operability or efficiency can be given.
Made with Metropac ©2022

Primrose Walk

Grange Park
NN4 5DE

£1,075 PCM

A deceptively spacious two bedroom first floor apartment with accommodation comprising secure communal entrance, hallway, sitting/dining room, kitchen/breakfast room, master bedroom with a walk through dressing area and en-suite, second bedroom and a modern bathroom. Outside are two allocated parking spaces and a shared garden for the block enclosed by timber fencing. Further benefits include uPVC double glazing and gas radiator heating.

Tenancy Information

- Deposit: £1240.00 (1 Week Holding Deposit - £248.00)
- Smokers: Not Allowed
- Unfurnished
- Length of Tenancy: Long Term
- Available: Early June 2026

Additional information

- Council Tax Band: C
- Energy Efficiency Rating: C

Viewing

Viewing strictly by appointment – details below

Disclaimer

O’Riordan Bond Estate Agents Limited has not tested apparatus, equipment, fittings or services and so cannot verify they are in working order. The buyer is advised to obtain verification from their solicitor or surveyor.

O’Riordan Bond Weston Favell Lettings
01604 814400

lettingswestonfavell@oriordanbond.co.uk

